

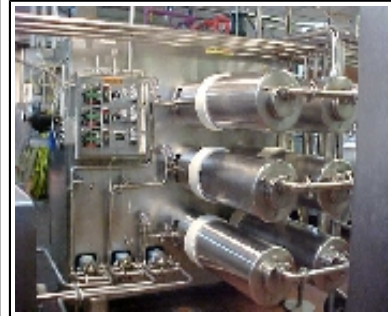


Remanufactured and  
Reconditioned Equipment  
New and Used parts

Martin Brothers, Incorporated  
P.O. Box 639 3057 Cajun Drive  
Winnsboro, LA 71295  
1-800-652-2532  
www.teammartinbrothers.com

### 1800 GPH Freezer, 6 Tubes, 3 Flavors

<b>Item #</b>	FR180033D180	<b>Selling Price</b>	\$134,000.00
---------------	--------------	----------------------	--------------



Totally remanufactured machine with rechromed freezing tube(s), new ammonia gauges, new bearings and seals all through; rebuilt pumps, rebuilt sanitary gauges, ammonia control valves and dasher. New blades, wiring and electrical controls. Variable frequency pump speed controls with forward mounted Nema 4 control panel in stainless enclosure. Remanufactured Nema 1 starter panel. Run tested through the starters and controls. Add \$1800.00 per refrigerant circuit for conversion to Freon. NA = NOT APPLICABLE

<b>Manufacturer</b>	Cherry Burrell	<b>Cover</b>	Stainless steel
<b>Model Number</b>	33D180	<b>Bottom</b>	Stainless steel
<b>Serial Number</b>	Per machine	<b>Inlet</b>	2 inch triclamp
<b>Refrigerant</b>	Ammonia	<b>Outlet</b>	2 inch triclamp
<b>Heating</b>	Hot gas	<b>CIP Inlet</b>	NA
<b>HP</b>	3 @ 31 1/2 each	<b>Valve</b>	NA
<b>Drive</b>	Belt	<b>Number Tubes</b>	6
<b>GPH</b>	1800	<b>Size Tubes (in)</b>	6x48
<b>Agitator</b>	Whipping dasher	<b>Dumprail Ht (in)</b>	NA
<b>Speed (rpm)</b>	1750 (motor)	<b>Weight (lbs)</b>	11,500
<b>Elect Spec</b>	220/440-3-60	<b>Dimensions (in)</b>	97Lx88Wx88H